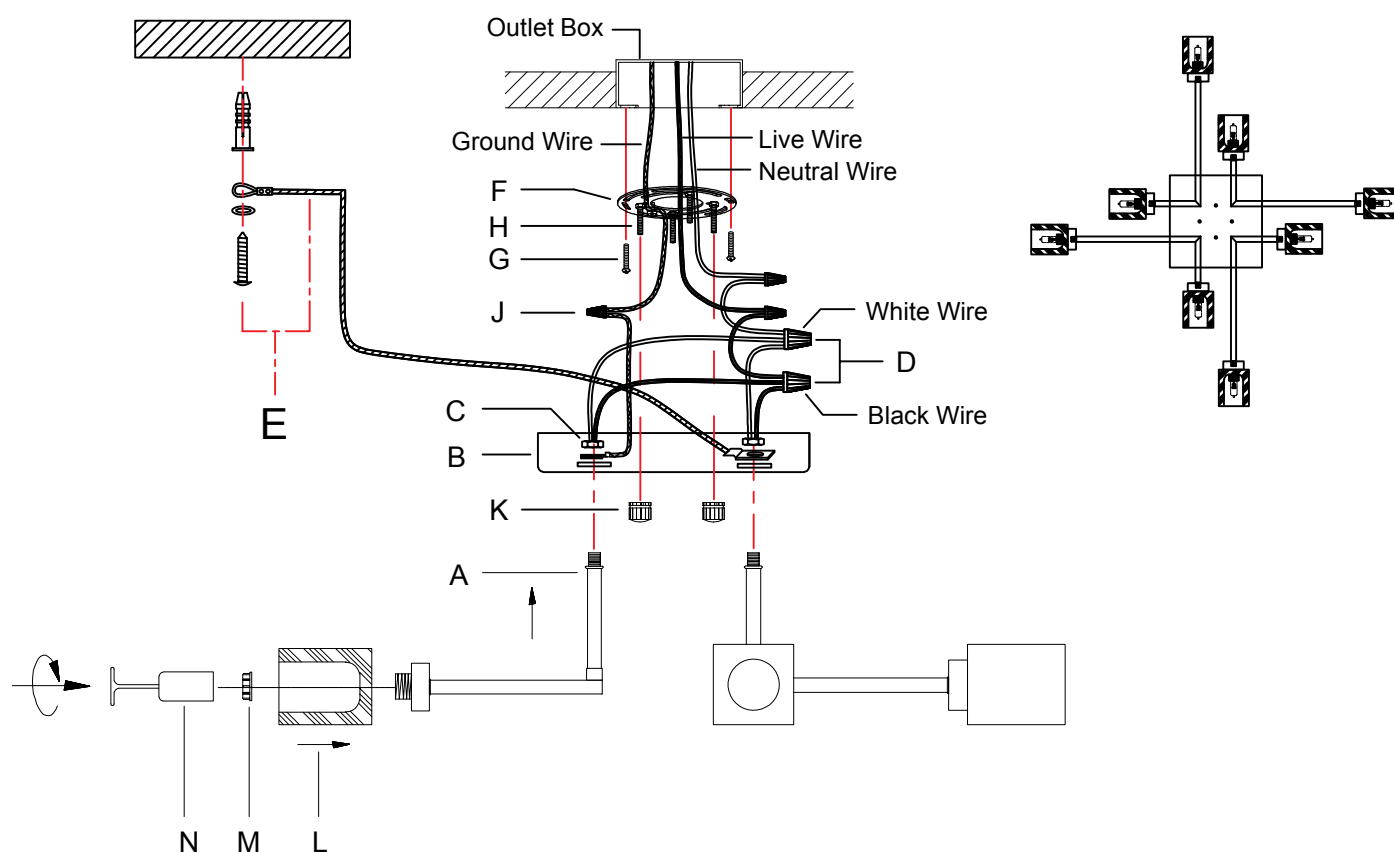


ITEM NO. :T7231-8CU

ASSEMBLY INSTRUCTIONS

1. Fix the lamp body (A) to the canopy (B) and secure with the nuts (C).
2. Connect the wires (D) of 8 lamp holders and divide them into two groups (4/4 lamp holders in a group): black wire with black wire and white wire with white wire. Turn the wire nuts to twist the wires together. Wrap the wire nuts with insulated rubber tape.
3. Attach the screw to the ceiling using the security wire (E) to secure.
4. Install the mounting plate (F) on the outlet box with the screws (G).
5. Loosen the hex nuts around the bolts (H) and screw in or unscrew the bolts from the junction box to get the right length for installation.
6. Connect the fixture wire to the circuit wire with the wire nuts (J): black wire with live wire, white wire with neutral wire, ground wire with ground wire. Turn the wire nuts to twist the wires together. Wrap the wire nuts with insulated rubber tape.
7. Attach the canopy (B) to the mounting plate (F) using the ball nuts (K) to secure.
8. Put the socket ring (M) into the socket spanner (N), attach the glass shade (L) to the lamp holder, and secure the glass shade with the socket ring (M) in the socket spanner.

Please consult a qualified Electrician if you are not familiar with electrical wiring.



Note: Please make sure that the junction box is able to bear four times the weight of the light fixture before the installation and assembly of the light fixture.